

***SHOOTING AT SCHOOL***

***SEEING THE WORLD WITH NEW EYES***

# ***WHAT TO SHOOT?***

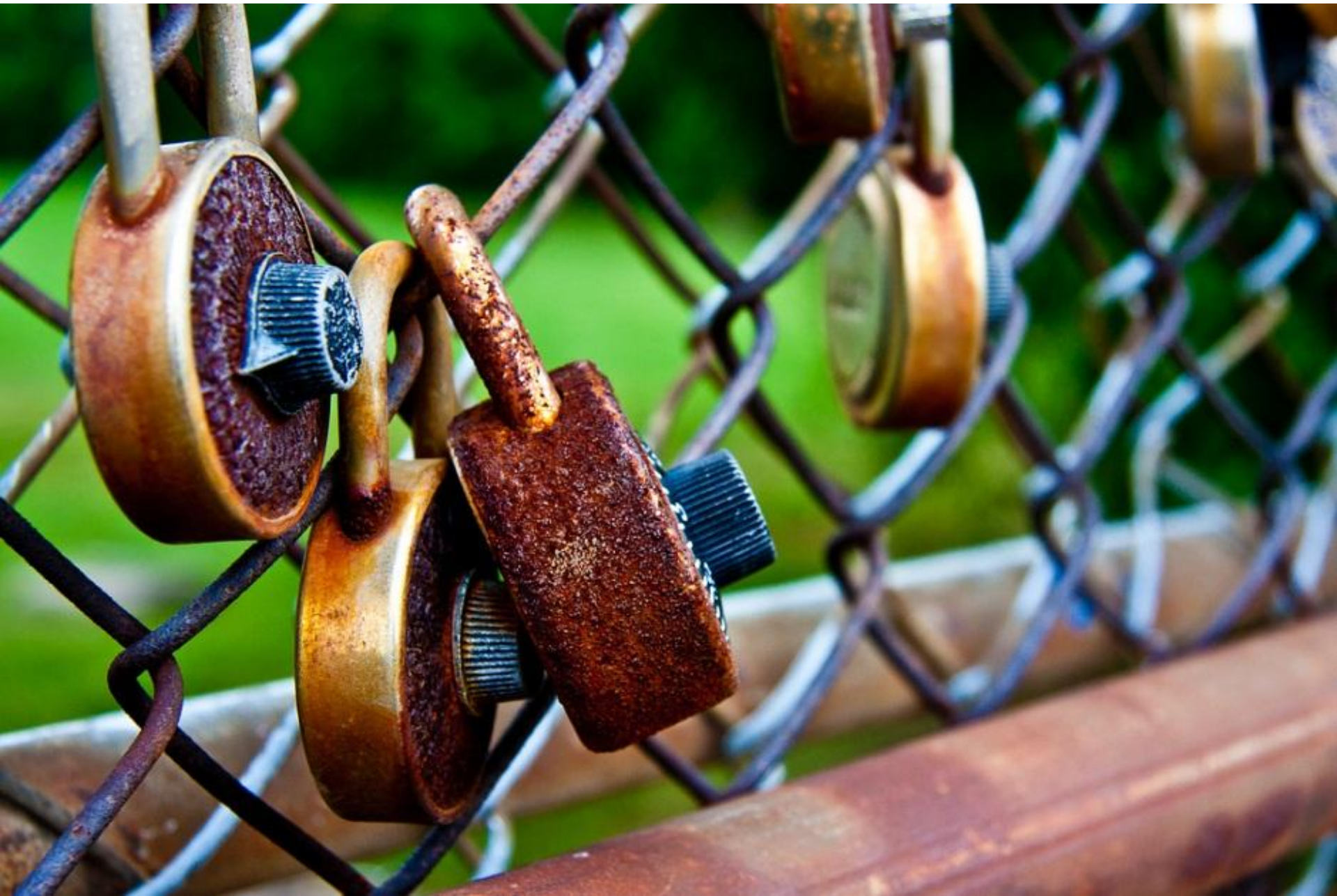
It can be a challenge to shoot at school, not because there aren't interesting things to shoot, but because we see it every day.



# ***SEEING WITH FRESH EYES***

- The challenge lays in seeing our environment with “traveller’s” eyes. When we go away on vacation, everything is new, we are invigorated and we see things to shoot all over the place.
- How can you get inspired by your everyday environment as you would while travelling?

***TECHNIQUE #1:***  
***ZOOM IN ON INTERESTING DETAILS***



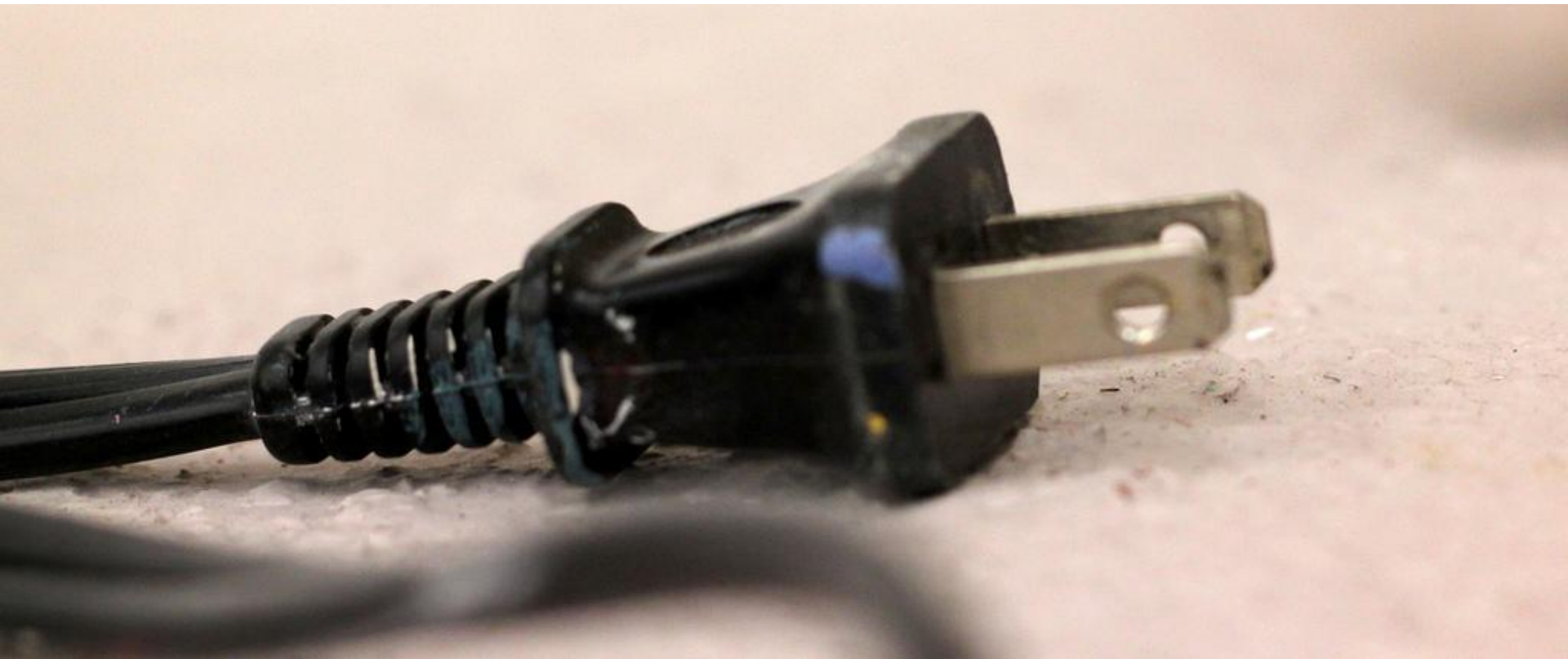
















***TECHNIQUE #2:***  
***NOTICE INTERESTING LINES IN***  
***ARCHITECTURE***









***TECHNIQUE #3:***  
***FIND REPETITION AND PATTERN***



NATIONAL GEOGRAPHIC	MARCH 1996	XINJIANG • MUMMIES • PENGUINS
NATIONAL GEOGRAPHIC	JANUARY 1996	NEANDERTALS • EDMUND FITZGERALD
NATIONAL GEOGRAPHIC	NOVEMBER 1995	OCEANS • TOKYO FISH MARKET • SIBERIA
NATIONAL GEOGRAPHIC	SEPTEMBER 1991	GERMANY GERMANY • SPIDERS • ANTARCTICA • JAPANESE WOMEN
NATIONAL GEOGRAPHIC	APRIL 1990	ANTARCTICA • JAPANESE WOMEN
NATIONAL GEOGRAPHIC	MAY 1990	GREAT RIFT • LAKE MALAWI • EAST HAITI
NATIONAL GEOGRAPHIC	AUGUST 1990	SOLAR SYSTEM NW PASSAGE • VOLCANOES
NATIONAL GEOGRAPHIC	APRIL 1989	RADIATION • KROMAN • JOHN MUIR
NATIONAL GEOGRAPHIC	AUGUST 1989	SAN DIEGO • BLACK WOMEN • OCEANS
NATIONAL GEOGRAPHIC	APRIL 1989	RADIATION • KROMAN • JOHN MUIR
NATIONAL GEOGRAPHIC	JUNE 1989	DINOSAURS • EXTINCTIONS • MALT
NATIONAL GEOGRAPHIC	MARCH 1989	ABOVE CHINA • FAULKNER • SOUTH AMERICA
NATIONAL GEOGRAPHIC	JUNE 1988	TIDEWATER ETRUSCANS • ELLESMERE
NATIONAL GEOGRAPHIC	JULY 1988	ATLANTA • KOURION EARTHQUAKE
NATIONAL GEOGRAPHIC	MAY 1988	WOOL • INDIA'S KERALA STATE • SIBERIA
NATIONAL GEOGRAPHIC	AUGUST 1988	LEMURS • ANNAPOLIS • DAEDALUS
NATIONAL GEOGRAPHIC	MAY 1987	WOLVES • AUSTRALIAN SEAS
NATIONAL GEOGRAPHIC	MARCH 1987	AUSTRALIAN SEAS
NATIONAL GEOGRAPHIC	APRIL 1986	CENTRAL AMERICA RIO AZUL
NATIONAL GEOGRAPHIC	DECEMBER 1986	NORTHERN PLAINS
NATIONAL GEOGRAPHIC	SEPTEMBER 1986	SENSE OF SMELL
NATIONAL GEOGRAPHIC	AUGUST 1984	ROCKIES MEXICO CITY POPULATION
NATIONAL GEOGRAPHIC	JANUARY 1983	RAIN FORESTS JUNGLES
NATIONAL GEOGRAPHIC	SEPTEMBER 1983	SATELLITES SPACE LAB
NATIONAL GEOGRAPHIC	MARCH 1983	ATLANTIC GATEWAYS GHOST SHIP
NATIONAL GEOGRAPHIC	JANUARY 1983	RAIN FORESTS JUNGLES
NATIONAL GEOGRAPHIC	FEBRUARY 1983	ARCTIC ALASKA TOI LAPTEV
NATIONAL GEOGRAPHIC	DECEMBER 1982	MEDITERRANEAN
NATIONAL GEOGRAPHIC	APRIL 1982	POLAND SINAI HUMBRAN
NATIONAL GEOGRAPHIC	MARCH 1980	CHINA NORTH CAROLINA
NATIONAL GEOGRAPHIC	JUNE 1980	SHROUD BANFF MEXICO
NATIONAL GEOGRAPHIC	AUGUST 1980	WATER MILWAUK
NATIONAL GEOGRAPHIC	JULY 1980	CHINA SHANGHAI PONY EXPEDITION
NATIONAL GEOGRAPHIC	AUGUST 1979	BIRD MIGRATION WALK AMERICA
NATIONAL GEOGRAPHIC	JULY 1979	U.S.

CHILE CAVES • MARCO POLO II • ASIATIC LIONS • WALES • U.S.S. ARIZONA • DJENNÉ • CARY, NC

LIGHT • RAIN FOREST • CHINA TOMBS • VOLCANOES • LEAKEY • LEOPARDS • SWAHILI COAST • ADJUNTAS, PR

OCTOBER 2001



***TECHNIQUE #4:***  
***CAPTURE THE MOVEMENT OF PEOPLE IN***  
***AND AROUND THE SCHOOL***











***TECHNIQUE #5:***  
***LOOK UP! LOOK FOR INTERESTING LIGHT,***  
***CLOUDS, SKIES***



***TECHNIQUE #6:***

***HAVE FUN WITH YOUR SHOOTING!***





***TECHNIQUE #7:***

***SET UP PROPS AND ARRANGE OBJECTS***











***TECHNIQUE #8:***  
***USE A MODEL***



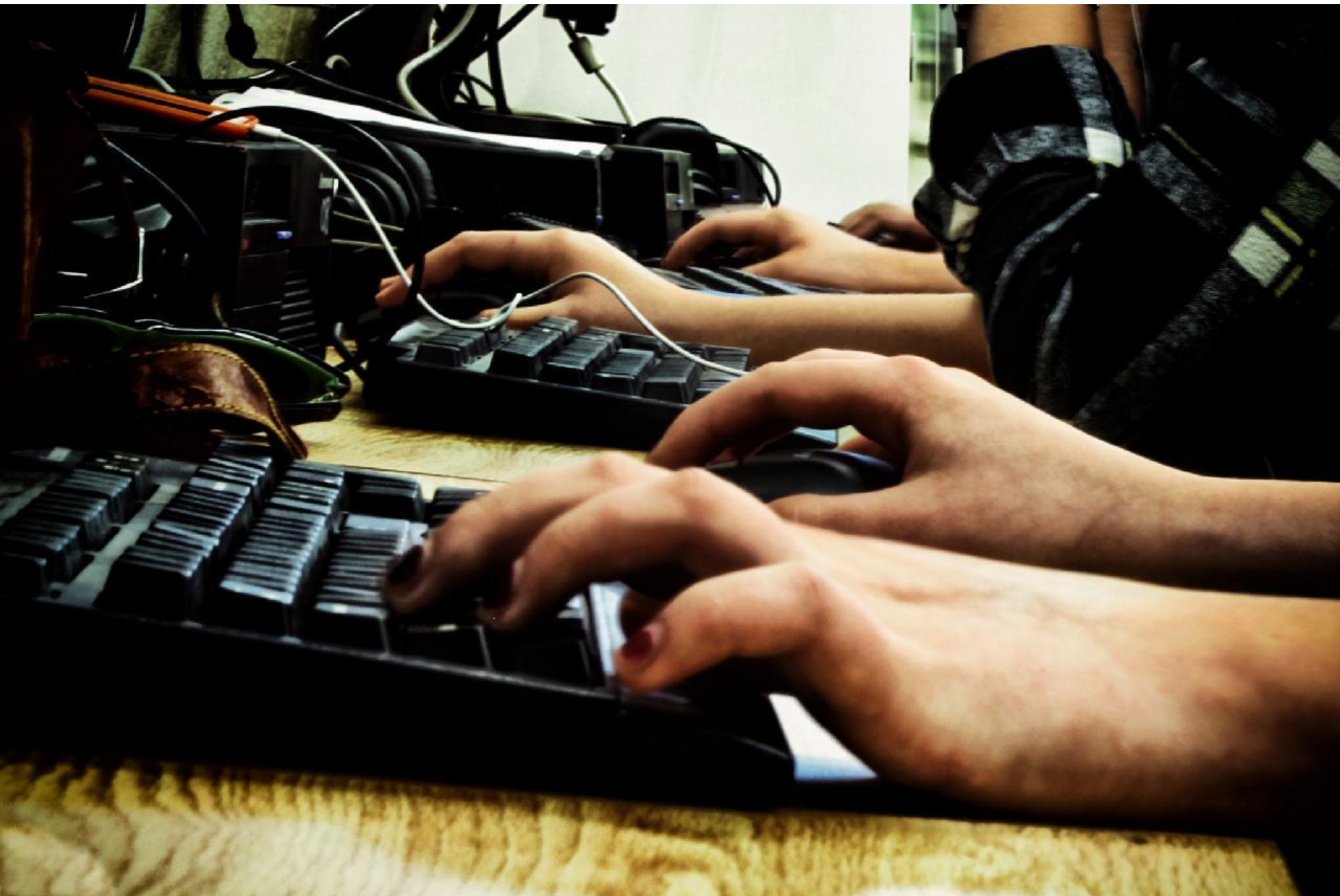








***TECHNIQUE #9:***  
***CROP IN INTERESTING WAYS***





***TECHNIQUE #10:  
CAPTURE AUTHENTIC MOMENTS IN THE  
SCHOOL***

***(DON'T FORGET TO ASK PERMISSION IF YOU WANT TO  
SHOOT IN A CLASSROOM)***



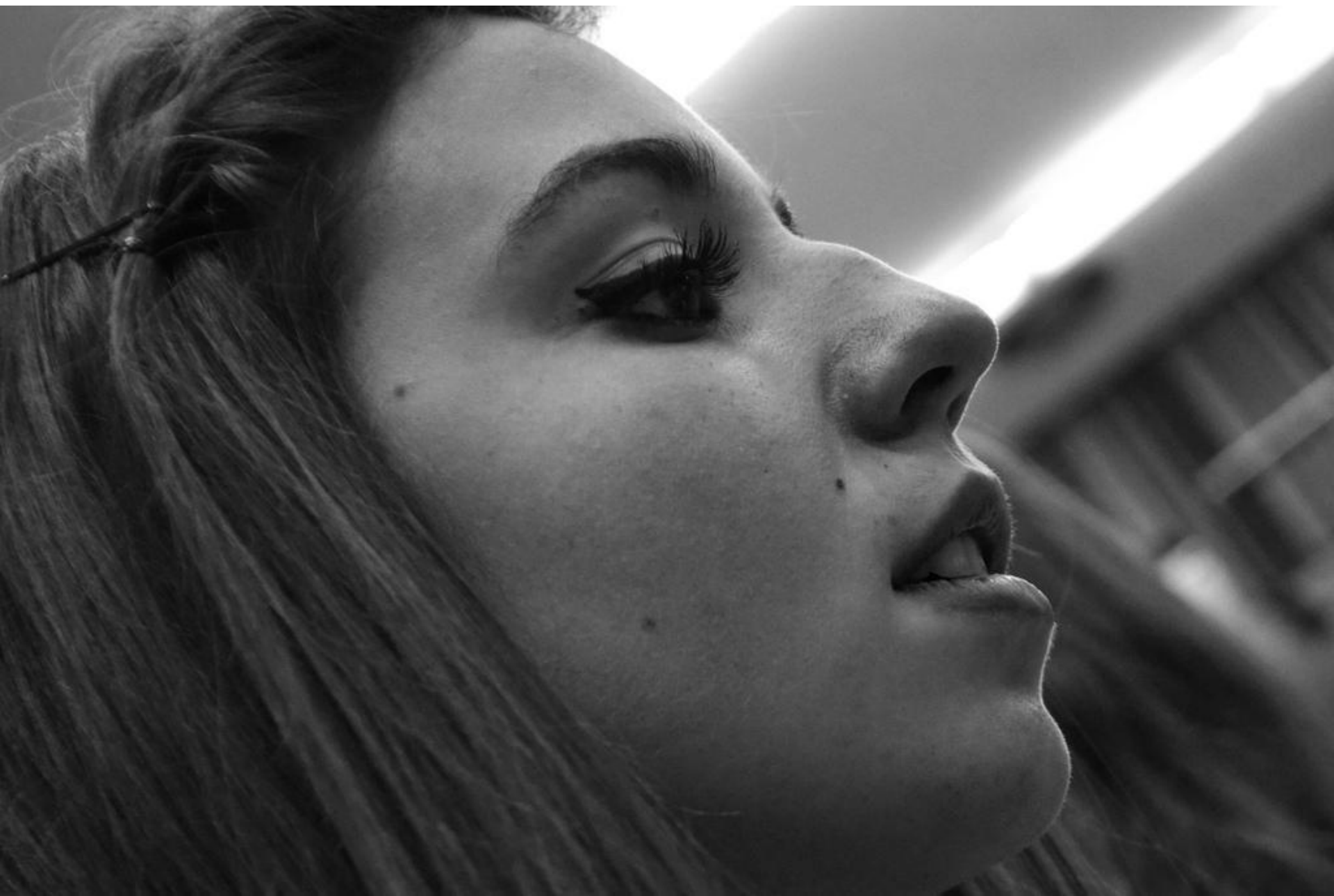














***WHAT AREAS OF THE SCHOOL ARE  
ESPECIALLY VISUALLY INTERESTING?***